



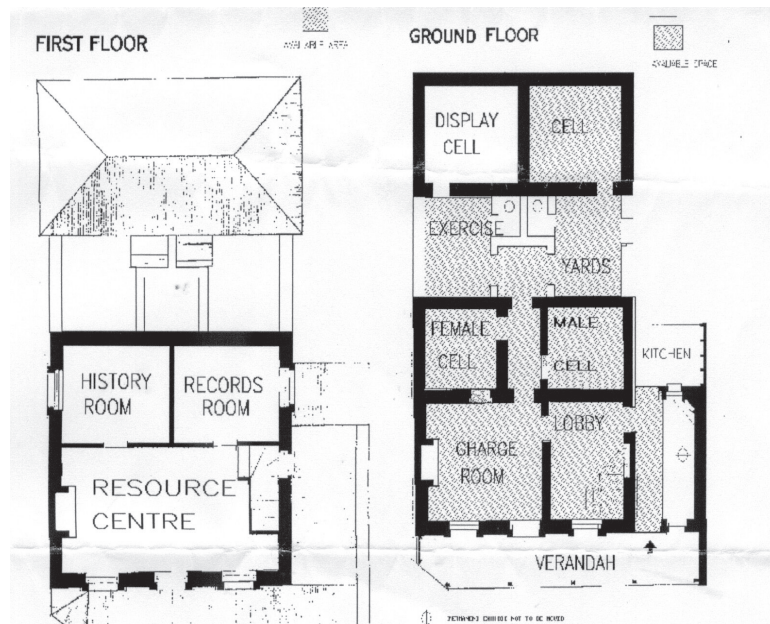
The Balmain Watch House Exhibition Space

The Balmain Association Inc. ABN 1618 1806 487

P O Box 57 Balmain 2041

www.balmainassociation.org.au

Standard Hiring Charges



These diagrams indicate the available exhibition space on the Watch House lower floor.

The upper floor is **not included** in the standard rental charge and is off limits to exhibitors and members of the public. The front and back gardens can be used for entertainment. A kitchen is available with some equipment comprising: electric jug, trays, small refrigerator, some water jugs & vases, some crockery & cutlery, hot water service but no tea towels or glasses.

A single weekend comprises:

- Collecting the keys on Wednesday
- Hanging and preparation Thursday and Friday
- Opening Function (if desired) Friday evening
- Public exhibition Saturday and Sunday

For this the rental is \$300.00
For additional days of opening the rental is \$50.00 per day

PLUS:

- Commission 15% on exhibition sales
- Cleaning bond (refundable) \$50.00

The Watch House is not available during the months of April, September and from second week of December to second week of January.

All monies raised by exhibitions at the Watch House are used for the restoration of the building. The Balmain Association is the local historical society and all members of the Committee are volunteers.

BOOKINGS Preferred dates must be notified by July for the following year. Every effort will be made to give applicants their first choice of dates but these may be limited to one weekend only in the most popular months ie May, October and November.

DEPOSIT A deposit equal to 50% of the rental plus cleaning bond is payable on confirmation of dates and receipt of contract. The deposit will form a cancellation fee should that be necessary ie a late cancellation that cannot be re-booked. Information about this payment will be forwarded with contract.

REMAINDER RENTAL Balance of the rental is due on collection of the key which is normally on the previous Wednesday afternoon or Thursday morning by prior negotiation.

COMMISSION of 15% is payable to the Association based on the listed sale price of items and due within 30 days of exhibition closing.

Further information will be included in the terms and conditions of hire which will be sent on confirmation of booking dates.