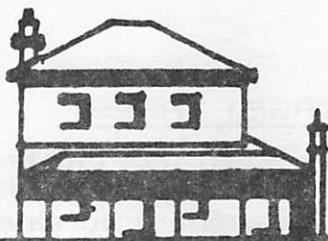
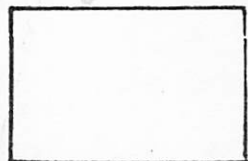


If a cross appears in this box your subscription is due.



# THE BALMAIN ASSOCIATION

P.O. Box 57,  
Balmain.  
N.S.W. 2041.

Issue No. 42

FEBRUARY 1973

## ASSOCIATION'S PROPOSED PARK

Members will remember that plans are in hand to transform the vacant block of land next to the Watch House into a public park.

Leichhardt Municipal Council has offered to help with the removal of rubbish and to maintain and clean the area once it is grassed and planted out. In the meantime, the History Group has conducted an "archaeological dig" on the site and has unearthed most of the foundations of the Presbyterian church which originally stood on the block.

Work is proceeding each Saturday morning and the Management Committee will consider whether it is feasible to include these foundations in the final plan for the park.

## CHILDREN'S LIBRARY

The Association has been delighted to receive from Mr. Scott Erickson of the Australian Red Cross Society, N.S.W. Division, a generous donation of over 40 books for the Children's Library.

These books have been collected and delivered with the compliments of the Red Cross Library Service. The work of cataloging the books is in hand and they will be available for borrowing as soon as is possible.



## FERRY SERVICE

The Association has been writing to the Minister for Transport for a long time about the inadequacy of the Balmain Ferry Service but instead of getting an improved service, the existing one has been curtailed. Residents have written to the Minister also suggesting reasonable alternatives. The Association has again written, pointing out that the number of passengers using the Balmain peak hour service is reported to have increased by 31%, and suggesting that there is potential patronage for an extended Balmain Ferry Service. Our suggestion is that a separate ferry service starting at Elliott Street wharf and picking up at Long Nose Point, Yeend Street, Thames Street and then Darling Street and Circular Quay, would be a viable financial proposition at least in peak hours.

The Minister has replied that he has asked the Sydney Harbour Transport Board, of which the Chief Commissioner of the Public Transport Commission, Mr. P.H. Shirley, is Chairman, to examine the Association's proposition and to let the Minister have its views. The Minister has undertaken to write again as soon as he has received the Board's advice.

## THE "BAZZA" PARTY

AT 21 WILLIAM STREET,  
ON SATURDAY, 27TH JANUARY,  
at 8.00 p.m.  
BRING YOUR OWN ICY COLDS  
AND \$1.00  
PRIZES FOR THE BEST BAZZA  
AND AUNTY EDNA

## CARE OF STREET TREES

As part of an overall tree planting programme in the Municipality of Leichhardt many young trees, only moderately advanced, are being planted.

For these trees to develop it is important that they be given maximum care in the early stages. With this in mind, your co-operation and assistance is sought.

The important areas where your help would be appreciated are as follows:-

### 1. Watering

It is important that good soaking waterings be given regularly. If insufficient water is applied it will not penetrate to the deeper layers of soil. As a result the tree will be shallow-rooted and may not survive.

### 2. Weeding

Within the tree plot.

### 3. Cultivating

Loosening of the surface within the tree plot.

### 4. Reporting Problems

Please phone 56-6311 should you notice any of the following:

- (a) Caterpillars
- (b) Cup Moths
- (c) Termites
- (d) Unnatural yellowing of leaves
- (e) Any other damage to the tree

In implementing this policy of community co-operation your Council confidently anticipates that it will receive general support. This will enable Council to make the maximum use of its resources and will contribute to the more rapid and effective establishment of trees within the Municipality.

## "NEWS SHEET" DISTRIBUTION

This is an appeal for two more distributors to help distribute the "News Sheet" in the Balmain/Rozelle area.

About half an hour of collating work and about one hour of foot work once every two months is what the job demands. So if you have nimble fingers and nimble feet phone David Porter on 827-1081 and he will give you the details.

Thank you.

## THANK YOU

Mr. Snell, one of our members, and also President of the Balmain/Rozelle Pensioners Association has kindly donated two jacaranda trees and one prunis tree for planting in the Watch House grounds.

## WANTED - IDEAS

If you have any suggestions for Fund-Raising or any type of social event please let us know.

The Activities Sub-Committee will welcome ideas and the occasional offer of help for organising parties or whatever.

Phone: Jeannette Stevenson - 82-4255 or David Porter - 827-1081, or write to the Balmain Association, Activities Sub-Committee, Box 57, P. O. Balmain 2041.

## MANAGEMENT DIRECTORY

President: Bob Beverley 82-5279  
Secretary: Margaret Dobson 82-2774  
Treasurer: Richard Norman 82-4577

### Activities Sub-Committee:

Peter McRorie (V.P.) 827-1508  
Jeannette Stevenson 82-4255  
David Porter 827-1081

### Town Planning Sub-Committee:

David Chesterman 82-3776  
Neil Oates 82-5376  
Alan Rogers 82-4338

### Community Services Sub-Committee:

Vernon Reid 82-4695  
Sue Ballinger 827-1489

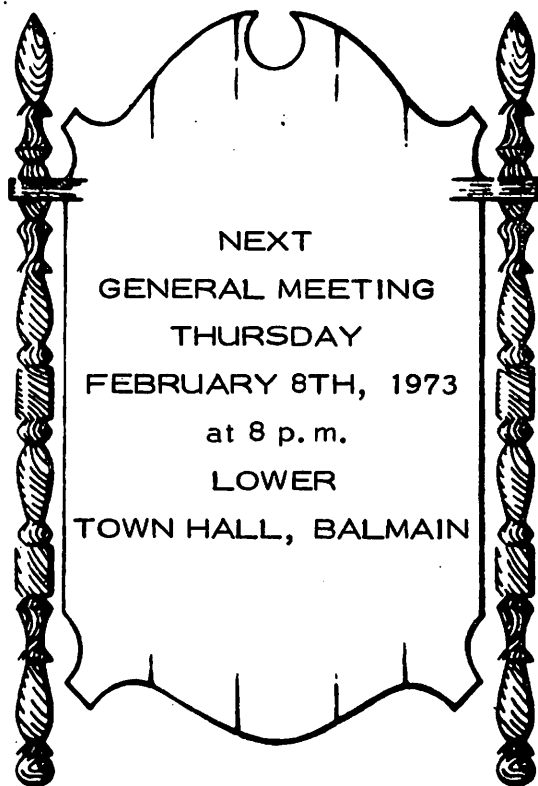
Please use these numbers for any facet of the Association's work that interests you.

## CRICKET MATCH

The Association's traditional cricket match will be played on Sunday 18th February at Birchgrove Oval starting at 12.30 p.m.

Make up a party among your friends and make it a picnic day at the Oval. Bring lunch, refreshments, a beach umbrella and the children, it's going to be a scintillating day of leather and willow.

If you know which end of the bat to hold then ring David Porter, 827-1081 and for the nominal fee of \$1.00 you will be automatically selected for the team of your choice.



MEMBERSHIP FORM

I wish to open/renew my membership with the Balmain Association and enclose \$ \_\_\_\_\_ \* subscription.

Name \_\_\_\_\_

Address \_\_\_\_\_

\*Subscription: Full membership \$2.00  
Pensioner 20c  
Junior 20c

Send to:  
The Hon. Treasurer,  
The Balmain Association,  
P. O. Box 57, Balmain, N.S.W. 2041

CHILD CARE CENTRE

Leichhardt Municipal Council has been investigating the possibility of maintaining a Child Care Centre at the Balmain Town Hall. Using the lower hall in the existing building was considered but the alterations to the original building were considered to be too expensive and would detract from its architectural and historical qualities. A proposal has now been submitted to the Council to build a separate building at the rear of the Balmain Town Hall with internal and external play areas and the Council has adopted the scheme and the necessary plans, etc., are being prepared. The Association has offered to assist the Council in any way it can to achieve the construction of a building such as has been proposed.

10/20 WESTON STREET BALMAIN

This controversial Development Application for permission to erect 17 home units and 14 town houses on the abovementioned property was before the Leichhardt Municipal Council at its meeting on 8th August, 1972. It was resolved that copies of the application and the report by the Council's Town Planner be referred to the State Planning Authority, the Maritime Services Board, Police Department (Traffic Branch) and the Department of the Valuer General. In the middle of November Council advised that replies had not been received from the State Planning Authority and the Department of the Valuer General. The Association has written to the Council suggesting that the developer be asked to amend the scheme by the reduction of floor space ratio as a result of removing 5 or 6 dwelling units and that the width of Weston Street be increased to approximately 18 feet wide plus a footpath. The Council has stated that these matters will be placed before Council when the application is being determined.